



Rated Power : 92 kW  
Rated Load : 3200kg  
Bucket Capacity : 1.8 m3  
Operating Weight : 10800kg

**XG936N**

**Wheel Loader**

**TRUSTED  
EVERYWHERE**



**Head Office**

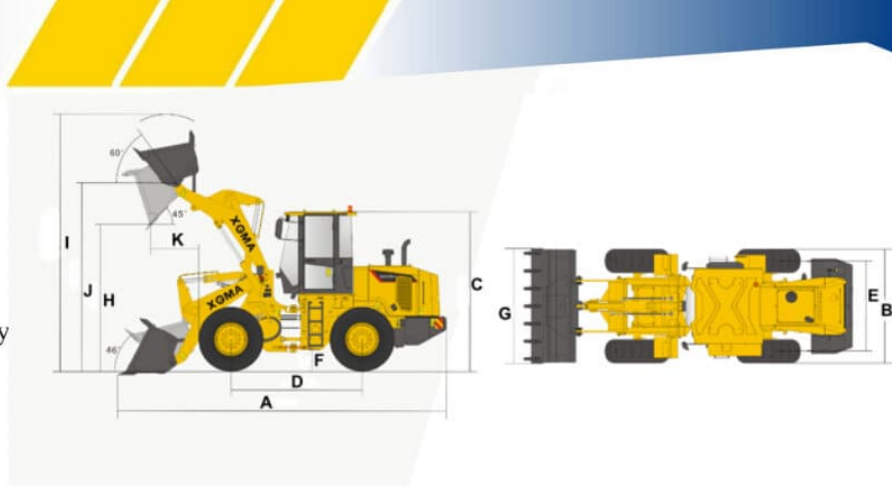
Kawasan Industri & Pergudangan Marunda Center  
Jl. Marunda Makmur Blok A2 No. 10, Jawa Barat 17211

☎ (+62-21) 2214 8889 / 2214 8087

[www.dayasakti.net](http://www.dayasakti.net)

## Key Features

- Powerful, flexible and highly efficient
- Easily operated safe and comfortable
- An optimized structure for stability and reliability
- Convenient maintenance and easy care



## Technical Specification

<b>Model</b>	<b>XG936N</b>	Max. Travel Speed - Reverse (km/h)	16
Engine Manufacturer	Yuchai	Tyre size	17.5-25-12PR
Engine Model	YC6J125Z-T20	Steering Angle (both left and right) (°)	35
Rated power (Kw)	92	Min. turn radius (mm)	5153
Rated speed (r/min)	2200	Min. turn radius outside bucket (mm)	5930
Max torque (N.m)	500	Overall Length (mm)	<b>A</b> 6990
Rated load (kg)	3200	Overall width (mm)	<b>B</b> 2245
Bucket Capacity (m3)	1.8	Overall height (mm)	<b>C</b> 3320
Operating weight (kg)	10800	Wheel base (mm)	<b>D</b> 2750
Gradeability (°)	29	Thread width (mm)	<b>E</b> 1800
Max. turning angle (°)	36	Ground clearance (mm)	<b>F</b> 358
Max. breakout force (KN)	100	Bucket width (mm)	<b>G</b> 2420
Maximum traction (KN)	105	Max. dumping height (mm)	<b>H</b> 3060
Hydraulic cycle time, raise (s)	6	Max. Operating Height (mm)	<b>I</b> 5050
Hydraulic cycle time, total (s)	10	Hinge pin height (mm)	<b>J</b> 3930
Gearbox	XGMA	Dumping reach (mm)	<b>K</b> 1020
Axle	XGMA	Fuel tank (ltr)	150
No of Speed	2F/1R	Hydraulic tank (ltr)	160
Max. Travel Speed - Forward (km/h)	40	Hydraulic System Pressure (MPa)	16

### BRANCH OFFICE

Jakarta | Tangerang | Pekanbaru | Medan | Palembang | Balikpapan |  
Pontianak | Makassar | Semarang | Surabaya | Denpasar