



技术厦工·品质传承

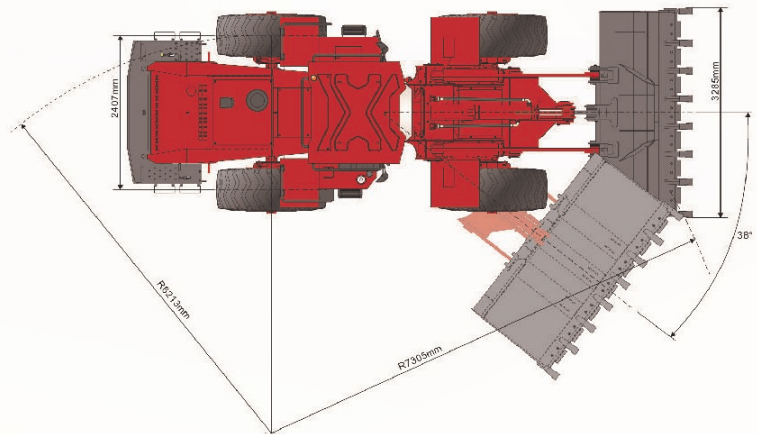
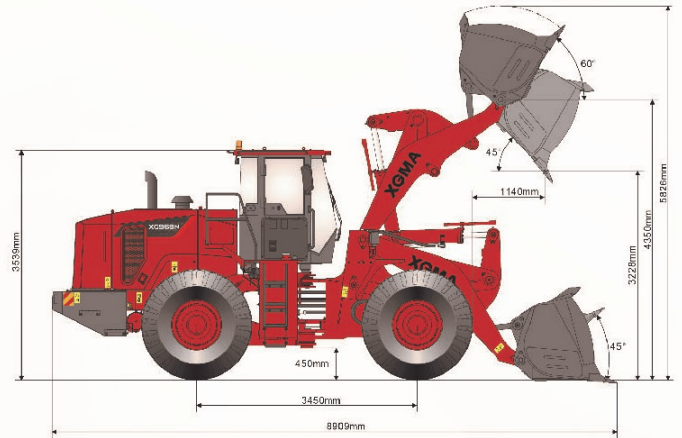


XG968N WHEEL LOADER

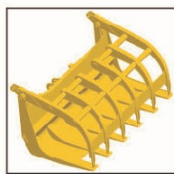
XG968N WHEEL LOADER

Performance Parameters	Overall Length for transport (mm)	8909mm
	Overall Width for transport (mm)	3285mm
	Overall Height for transport (mm)	3539mm
	Wheel Base (mm)	3450mm
	Wheel Tread (mm)	2407mm
	Mix. Ground Clearance (mm)	450mm
	Bucket Width (mm)	3285mm
	Turn Radius (Tire Center Line, mm)	6213mm
	Turn Radius (Outside of Bucket) (mm)	7305mm
	Max. Working Height (with standard bucket mm)	5826mm
	Max. Dumping Height (with standard bucket mm)	3228mm
	Dumping Reach (mm)	1140mm
Max. Recovery Angle (°)	38°	

Performance Parameters	Rated power	191kW
	Rated speed	2200r/min
	Optional Bucket capacity	3.0–5.0m ³
	Rated load	6500kg
	Operating weight	21000kg
	Forward I	6.8km/h
	Forward II	12km/h
	Forward III	23.8km/h
	Forward IV	38km/h
	Reverse I	6.5km/h
	Reverse II	11.8km/h
	Reverse III	24km/h
	Max Breakout force (kN)	200kN
	Max Traction force (kN)	186kN
Gradeability	29°	



Optional Attachments



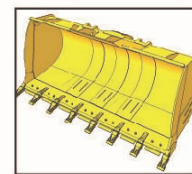
Grass grapple



Fixed log grapple



High dump boom



High dump bucket



XIAMEN XGMA MACHINERY CO., LTD.

No. 668, Guankou South Road, Xiamen, China

Tel: 400-6618-668 +86-592-2360090

E-mail: marketing@xiagong.com

www.xiagong.com

The information in this sample book is for reference only. Technical specifications and optional configurations are subject to change without notice.



Efficient Operation

- Widely-open and wide-body hood provides ample space for maintenance and repair operations.

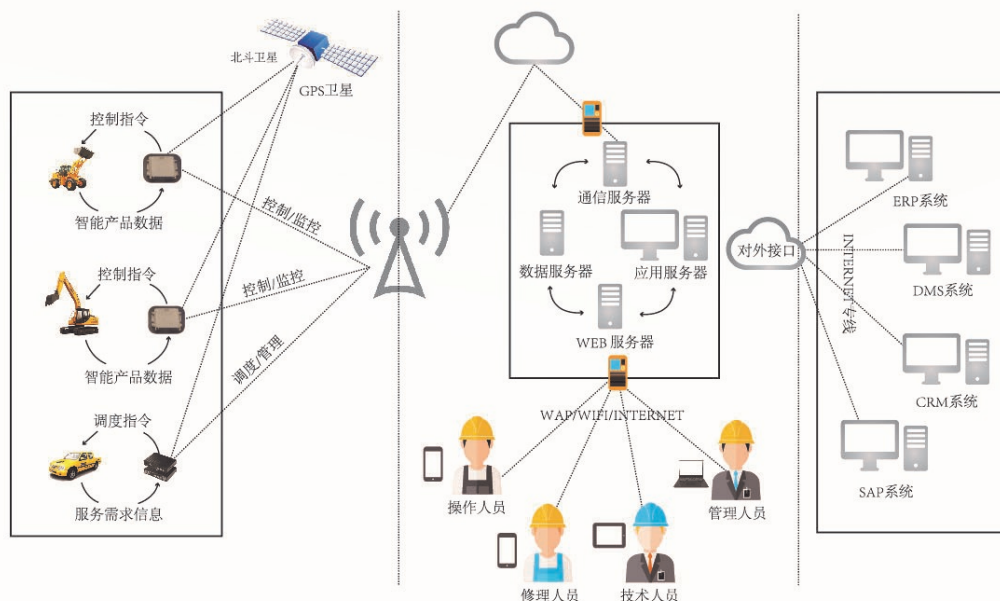


The gearbox oil filling port, filter and lubricating oil filling point are led out centrally, which is convenient for oil filling and convenient maintenance and repair.



XG968N adopts intelligently integrated and full-featured CAN bus multi-function LCD instrument. The beautiful layout and accurate control of equipment operating status at any time provides an efficient operation.

- XG968N is equipped with XGMA intelligent cloud platform system, which can control the operating status of the equipment in real-time. Also it grasps the work attendance status, and improves the efficiency of operation and management easily.





Safe and Comfortable

Equipped with standard pilot control, electronic lifting limit and automatic leveling provides comfortable and light operation for the operator.

XC968N adopts a hexahedron FOPS&ROPS, noise reduction and shock absorption cab, spacious room and wide field of vision. Furthermore, it's quipped with fresh air ventilation air-conditioning, ergonomic operation layout, which provides a healthy and comfortable driving condition for the operator.



The narrowed cut angle front part of the hood and Rear Assist radar for a better rear view provides a safer operation condition for the operator.



Emergency escaping window

The air parking brake system makes parking easy, efficient and safe.

With LED high-position work lights and hidden rear three-color lights, night work is clearer, beautiful, safe and reliable.

Humanized design of channels and handrails makes it easy for operators to get on and off the wheel loader safely.

The control buttons are within reach of the operator inside the cab and big storage space for use.

👍 Reliable and Durable Performance

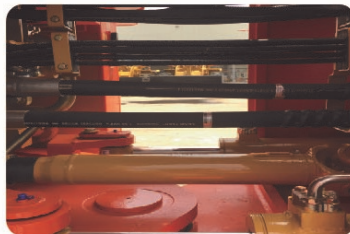
The frame adopts double-row tapered roller bearing structure with hinged joints in the middle, which increases the distance between upper and lower hinges, which has stronger bearing capacity and higher reliability.



Adopting ZF automatic shifting gearbox and Meritor heavy-duty drive axle, the transmission is reliable and efficient, the driving operation is simple and comfortable, the gear shift is smooth, and the performance is stable and reliable.



Using a single-row horizontal aluminum heat dissipation system, the cross-sectional area of the radiator is larger, and the heat dissipation effect is better. The new hood side door has better ventilation and heat dissipation performance, and the power machine is more efficient.



The optimized the whole machine management and wiring harness layout, increased the pipe line fixed point, which effectively prevents the pipe line from wearing out and improves the reliability and service life.

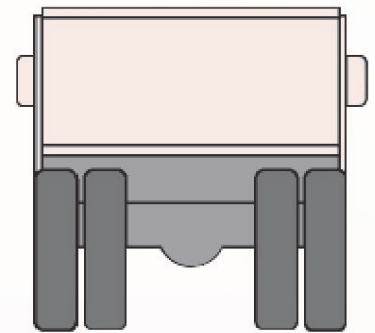
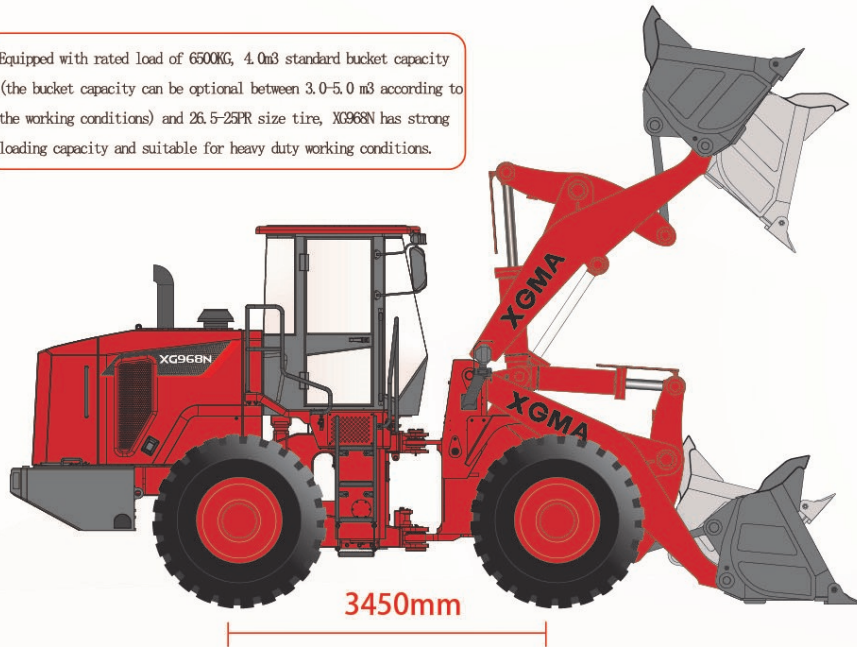
A new generation Heavy Duty King Wheel Loader

Excellent Performance

Equipped with rated load of 6500KG, 4.0m³ standard bucket capacity (the bucket capacity can be optional between 3.0-5.0 m³ according to the working conditions) and 26.5-25PR size tire, XC968N has strong loading capacity and suitable for heavy duty working conditions.



The total cycle time
(lifting-loading-descending) : 10s



3450mm long wheelbase, horizontal cylinder layout, big breakout force (over 200kN) and strong loading capacity is the advantage of XC968N wheel loader. The optimized design of the working device, the reinforced fork-shaped structure front and rear frame, and the high-strength torsion-resistant rear frame with a closed box-shaped section has higher carrying capacity and can meet the requirements of heavy-duty working conditions.

The use of dual-pump combined and split hydraulic system and the patented heavy-load unloading technology, which guarantee energy-saving and high-efficiency in work.



The engine is with customized high-power, high-torque and electronically controlled Tier III emission which makes XC968N with a variety of light to heavy working conditions.